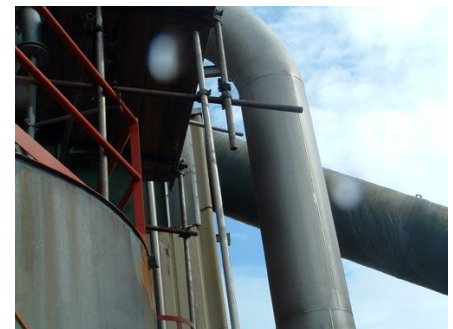




Project Description – Lenzing AG

Contract Description / Solution:

Our fitters are a thoroughly trained group of team players, all top specialists in their fields and they bring in a full range of mechanical capabilities and welding knowledge back-up to their tasks as a matter of course. Their strengths include 100% reliability and a total sense of responsibility. Since most of their work must be done during a shut-down period or after a machine part break, it must be ensured first and foremost that the machines are back to full functionality at the earliest moment possible and the result of this is a total demand on flexibility and commitment.





Project Description – Spitz

Contract Description / Solution:

Our client, Spitz & Co. gave us an order for all the stainless steel tubing in its bakery and fruit juice divisions and the top cleanliness standards in the work of our team proved a real bonus for this foodstuffs and drinks producer. The job schedule must be co-ordinated with total precision to ensure that the machines can be returned to operation as soon as possible. We also took on the pipeline production work for the fresh water supply and the waste water disposal. We also made conversions for a number of machines including pipelines.





Project Description – Zipf Brewery

Contract Description / Solution:

We manufactured and assembled various stainless steel pipelines in the brewing room, the filtration, cooling room, bottle storage cellar and in the well house. The pipeline for the water reservoir together with various steel constructions and visitor platforms were also manufactured and assembled by us. We employed highly qualified specialists in pipe laying and welding for these tasks. Cleanliness and care had the highest priority in the job team because of the very high foodstuff standards required for the work done for the Zipf Brewery.

